



SESSION PLANS

SESSION 3 - 1 HOUR

RESOURCES.

- o Paper and pencils



LEARNING OUTCOMES.

- o Understand THE ESTABLISHING SCENE.
- o Understand the nature of a PROTAGONIST.
- o Create a storyline for our characters.
- o Create new characters, where necessary.
- o Decide on a working title for our drama.

ACTIVITIES.

The Establishing Scene - 20 minutes

Revisit the characters we created last week. In pairs create a SITUATION for one, or both, of the characters.

- o Feedback, decide on protagonist.
- o Work with ideas, to create an establishing scene.

Storylining (whole class work) - 40 minutes

Developing a story from the establishing scene.

The Big Questions

- o Whose story is it? The PROTAGONIST.
- o What do they want?
- o What is the problem?
- o Who is the ANTAGONIST?

Construct STORYLINE for our audio drama – with a WORKING TITLE.

Further **Prompts** to help with storylining:

The 3 Act Structure - Beginning / Middle / End

Set it up / Shake it up / Sort it out

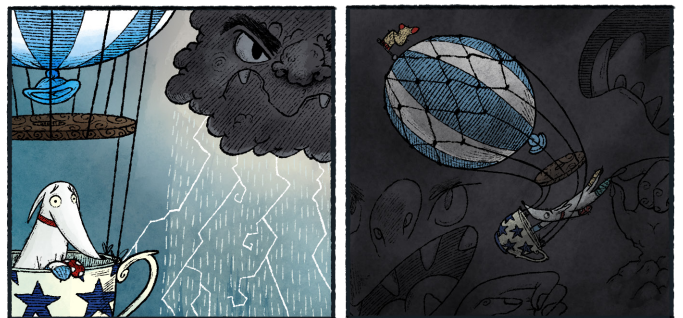
- 1 Beginning / Set it up** (establishing scenes / who's the protagonist? what's the problem?)
- 2 Middle / Shake it up** (things are not what we thought they were / reversals)
- 3 End / Sort it out** (resolution (solution) / cliff-hanger)

Organise our story into these 3 sections.

SOCKS THE DOG SETS OUT TO FIND THE SUN



AN ANGRY STORM CLOUD THREATENS THE QUEST



SOCKS WEATHERS THE STORM AND FINDS THE SUN

