



WORKSHEETS

STORYBOARD

STORYBOARD YOUR STORYLINE IN SCENE BLOCKS.

Number each scene, then identify the following details:

Where is the scene happening?

- If it's a house, which room?
- A school classroom/corridor, or other interior settings?
- A forest, beach, mountainside, park, or other exterior settings?

When is the scene happening?

- This can be indicated as simply morning, afternoon, evening, night.
- It can be a more specific time – e.g. 4pm, midnight, 3am...
- It can be a new scene, but continuous in time from the previous scene – in which case, write CONTINUOUS.
- It could be a flashback - e.g. A week earlier, or the day before...

Who is in the scene?

- List the characters.

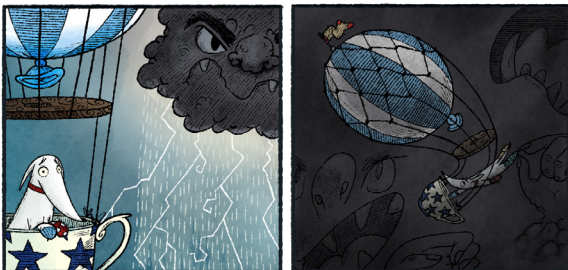


Action

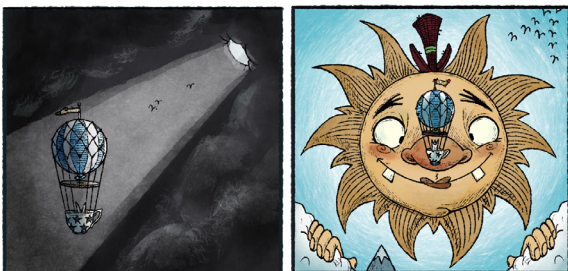
- What happens?
 - Try to think of this in terms of sound.

Sounds

- What other sounds do you hear in the scene?
 - Soundscape sounds that tell us where we are – e.g. traffic noise, children playing, crashing waves and seagulls etc...
 - Narrative sounds that are not dialogue – e.g. a car horn or bicycle bell as a warning to get out of the way, a door knock, keys in a lock...



SOCKS WEATHERS THE STORM AND FINDS THE SUN



Set out your storyboard in clear visual blocks. This will help with scripting. **NB – you do not need to write any dialogue in this process; in fact, it's better if you don't.**

SCENE 1	SCENE 2	SCENE 3
○ Where	○ Where	○ Where
○ When	○ When	○ When
○ Who	○ Who	○ Who
○ Action	○ Action	○ Action
○ Sounds	○ Sounds	○ Sounds

